

Customer Information Sheet

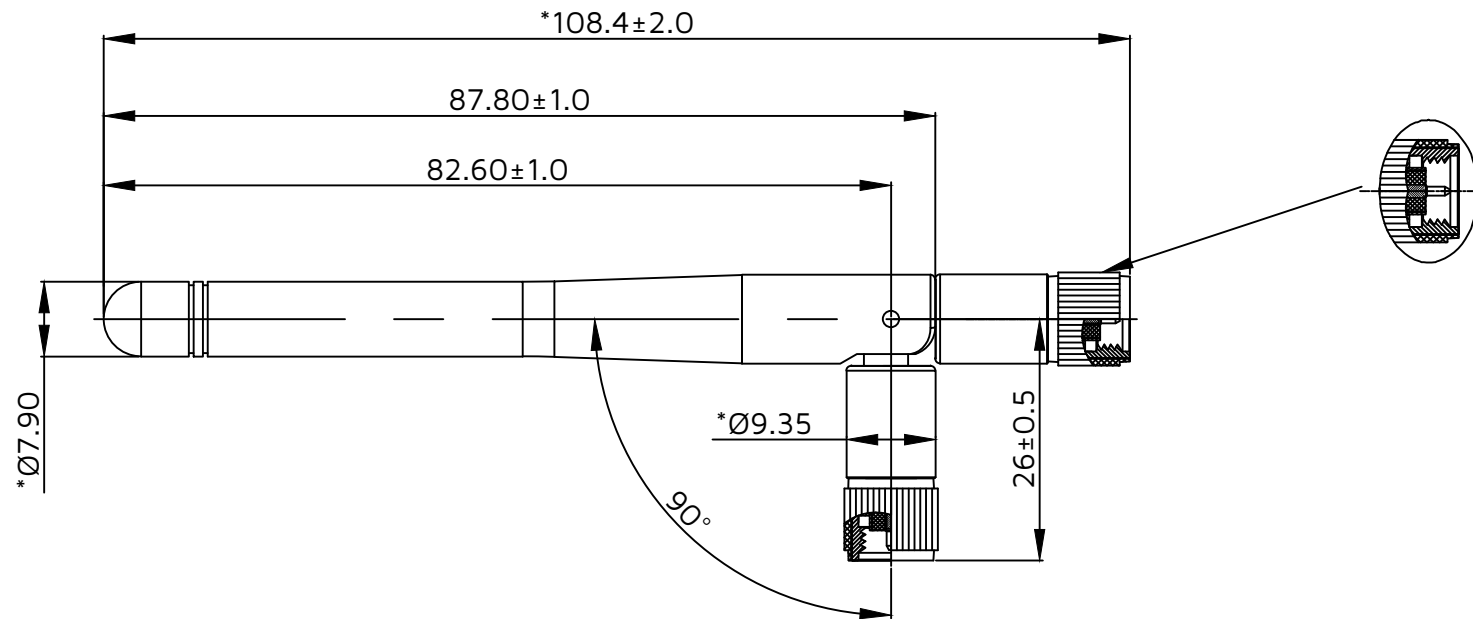
IF IN DOUBT - ASK



NOT TO SCALE

THIRD ANGLE PROJECTION

ALL DIMENSIONS IN mm



NOTES:

- 1.Frequency; 2.0GHz-7.5GHz
2400MHz~2500MHz VSWR;≤2.5
5150MHz~5850MHz VSWR;≤2.5
5925MHz~7125MHz VSWR;≤3.5
2. The size marked with * is the key inspection size.
3. Materials comply with ROHS standards.
4. Salt spray test needs to meet: 48H.
5. The radio frequency range requirements should meet the specifications.
6. The appearance of the product can not be damaged, and the appearance of the product has no color difference.

8	sheath	1PCS
7	Copper pipe	1PCS
6	Ø5.0 Black sleeve	1PCS
5	Copper pipe	1PCS
4	RG178 Brown CABLE	1PCS
3	Middle seat	1PCS
2	base	1PCS
1	SMA (Surface Black Paint)	1PCS
NO.	NAME	Q'TY

KC	1	03JUL25	--
NAME	ISS.	DATE	CN/CO
APPROVED: WALKER/MEIZY			
CHECKED: THIRI			
DRAWN: KC			

HARWIN

www.harwin.com

TOLERANCES

X. = ±1mm
X.X = ±0.50mm
X.XX = ±0.20mm
X.XXX = ±0.01mm

ANGLES = ±5°
UNLESS STATED

THIS DRAWING AND ANY INFORMATION OR DESCRIPTIVE MATTER SET OUT HEREON ARE CONFIDENTIAL AND COPYRIGHT PROPERTY OF THE HARWIN GROUP AND MUST NOT BE DISCLOSED, LOANED, COPIED OR USED FOR MANUFACTURING, TENDERING OR FOR ANY OTHER PURPOSE WITHOUT THEIR WRITTEN PERMISSION.

MATERIAL & FINISH:

TITLE:

2.4GHz Wi-Fi Stubby Antenna with Round Hinge
SMA Connector, Indoor Rated

DRAWING NUMBER:

MMANT-1301000-SM1-001

SHT
1
OF
1