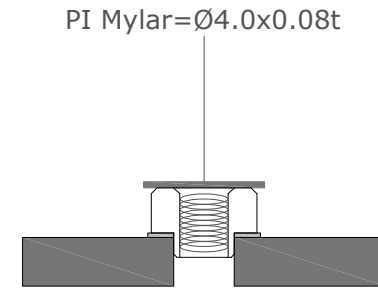
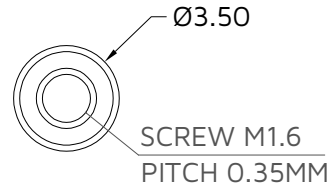


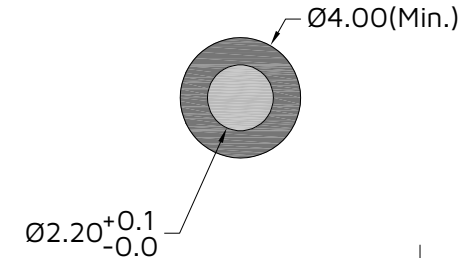
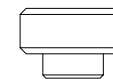
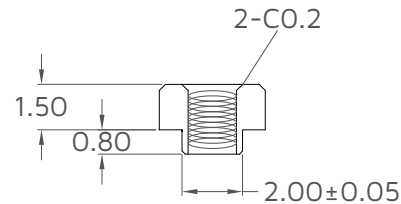
Customer Information Sheet

DRAWING NO.: SHEET 1 OF 2 IF IN DOUBT - ASK © NOT TO SCALE THIRD ANGLE PROJECTION ALL DIMENSIONS IN mm

1. Material: Brass#6801
2. M*/Pitch:M1.6*P0.35mm; Rated Current: 15A
3. Tightening Torque: $\leq 1.5\text{kgf-cm}$ (14.7N-cm)
4. Electroplating: Matte Tin(3-5um) over Nickel
5. Recommended Solder Paste Thickness: 0.15mm(150umMin.)
6. Service Temperature: -40°C-150°C
7. Re-flow Oven Peak Temperature: 245°C-260°C
8. Packing Quantity: 3000 PCS / reel
9. Tolerance : $\pm 0.1\text{mm}$ unless otherwise specified.
- 10.RoHS Compliant & Reach Approval



- Layout Area
- Solder Area
- Through Hole



UT	1	25APR23	-----
NAME	ISS.	DATE	CN/CO
APPROVED: Walker / Meizy			
CHECKED: Thiri			
DRAWN: UT			

HARWIN

www.harwin.com

TOLERANCES

X. = $\pm 1\text{mm}$
X.X = $\pm 0.50\text{mm}$
X.XX = $\pm 0.20\text{mm}$
X.XXX = $\pm 0.01\text{mm}$

ANGLES = $\pm 5^\circ$
UNLESS STATED

THIS DRAWING AND ANY INFORMATION OR DESCRIPTIVE MATTER SET OUT HEREON ARE CONFIDENTIAL AND COPYRIGHT PROPERTY OF THE HARWIN GROUP AND MUST NOT BE DISCLOSED, LOANED, COPIED OR USED FOR MANUFACTURING, TENDERING OR FOR ANY OTHER PURPOSE WITHOUT THEIR WRITTEN PERMISSION.

MATERIAL & FINISH:

SEE ABOVE

TITLE:

EMI/ESD/RFI SMT Nut;BOSS;Stand_off

DRAWING NUMBER:

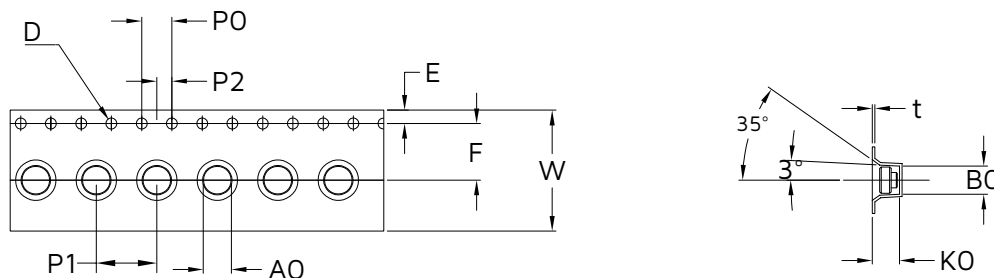
MMS-B35M16D201508T

SHT
1
OF
2

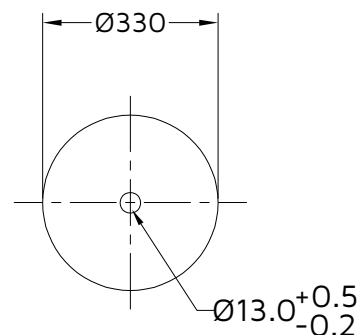
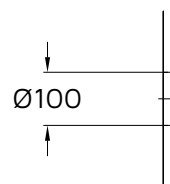
Customer Information Sheet

DRAWING NO.: SHEET 2 OF 2 IF IN DOUBT - ASK © NOT TO SCALE THIRD ANGLE PROJECTION ALL DIMENSIONS IN mm

t	P2	Po	D1	D	E	F	P1	Ko	Bo	Ao	W	ITEM
0.35±0.05	2.00±0.1	4.00±0.1	0.00±0.1	1.50±0.1	1.75±0.1	7.50±0.1	8.00±0.1	3.60±0.1	3.70±0.1	3.70±0.1	16.0±0.3	SPEC



REEL DIMENSIONS



UT	1	8OCT12	-----
NAME	ISS.	DATE	CN/CO
APPROVED: Walker / Meizy			
CHECKED: Thiri			
DRAWN: UT			

HARWIN

www.harwin.com

TOLERANCES
X. = ±1mm
X.X = ±0.50mm
X.XX = ±0.20mm
X.XXX = ±0.01mm
ANGLES = ±5°
UNLESS STATED

THIS DRAWING AND ANY INFORMATION OR DESCRIPTIVE MATTER SET OUT HEREON ARE CONFIDENTIAL AND COPYRIGHT PROPERTY OF THE HARWIN GROUP AND MUST NOT BE DISCLOSED, LOANED, COPIED OR USED FOR MANUFACTURING, TENDERING OR FOR ANY OTHER PURPOSE WITHOUT THEIR WRITTEN PERMISSION.

MATERIAL & FINISH:

PACKAGE QUANTITY

3000 PCS / REEL

TITLE:

EMI/ESD/RFI SMT Nut;BOSS; Stand_off

DRAWING NUMBER:

MMS-B35M16D201508T

SHT
2
OF
2